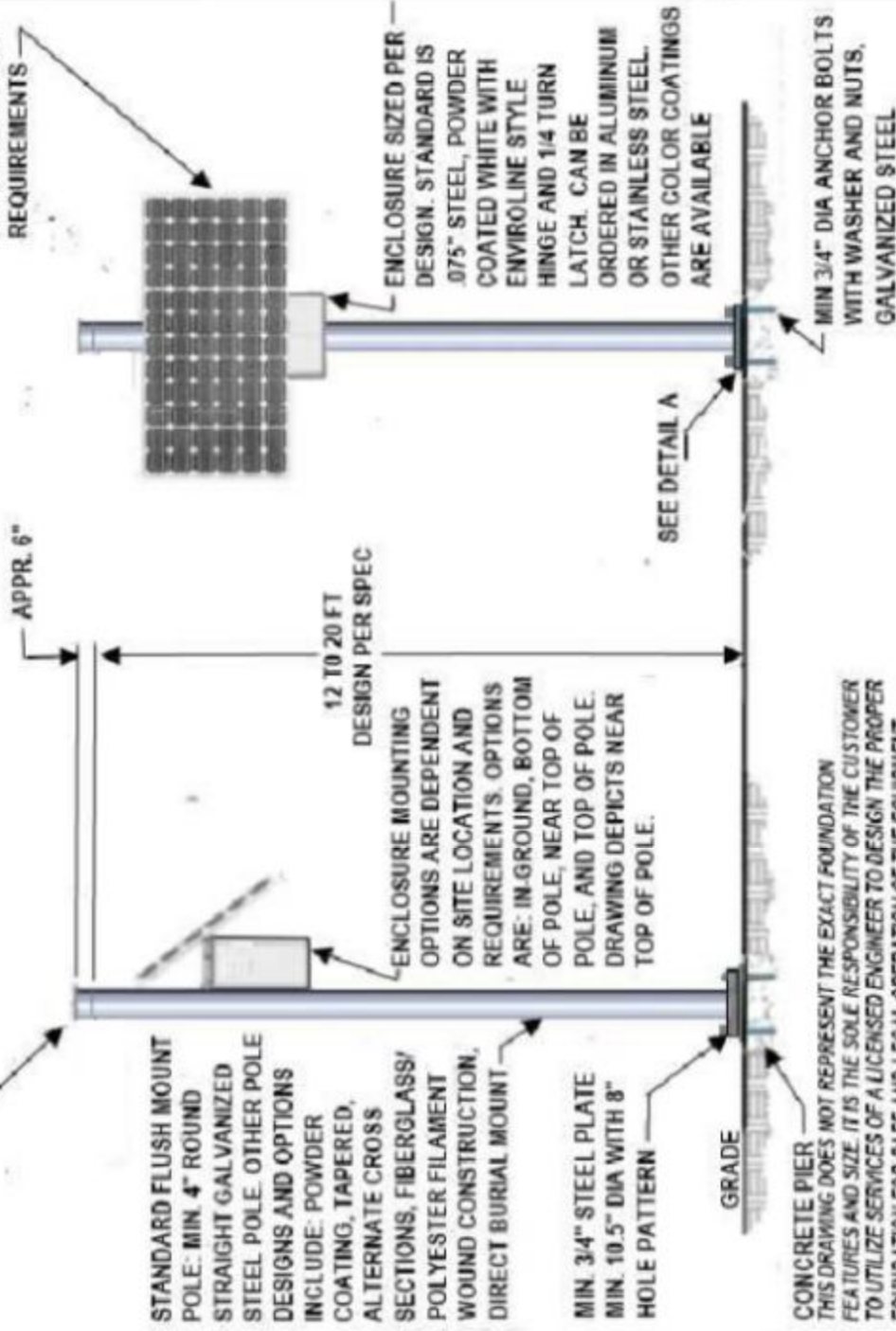


END CAP - CAN BE FITTED WITH OPTIONAL COMPONENTS
IE. CAMERAS, OBSTRUCTION LIGHTS, SIRENS



SOLAR PANEL SIZED
PER LOCATION AND
ELECTRICAL LOAD
REQUIREMENTS



STANDARD FLUSH MOUNT
POLE: MIN. 4" ROUND
STRAIGHT GALVANIZED
STEEL POLE. OTHER POLE
DESIGNS AND OPTIONS
INCLUDE: POWDER
COATING, TAPERED,
ALTERNATE CROSS
SECTIONS, FIBERGLASS/
POLYESTER FILAMENT
WOUND CONSTRUCTION,
DIRECT BURIAL MOUNT

MIN. 3/4" STEEL PLATE
MIN. 10.5" DIA WITH 8"
HOLE PATTERN

CONCRETE PIER
THIS DRAWING DOES NOT REPRESENT THE EXACT FOUNDATION
FEATURES AND SIZE. IT IS THE SOLE RESPONSIBILITY OF THE CUSTOMER
TO UTILIZE SERVICES OF A LICENSED ENGINEER TO DESIGN THE PROPER
FOUNDATION FOR SAFE AND LEGAL OPERATION OF THE EQUIPMENT.

12 TO 20 FT
DESIGN PER SPEC

ENCLOSURE MOUNTING
OPTIONS ARE DEPENDENT
ON SITE LOCATION AND
REQUIREMENTS. OPTIONS
ARE: IN-GROUND, BOTTOM
OF POLE, NEAR TOP OF
POLE, AND TOP OF POLE.
DRAWING DEPICTS NEAR
TOP OF POLE.

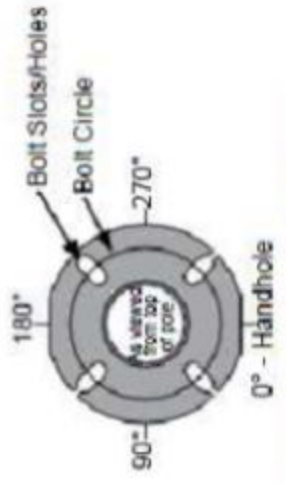
ENCLOSURE SIZED PER
DESIGN. STANDARD IS
.075" STEEL, POWDER
COATED WHITE WITH
ENVIROLINE STYLE
HINGE AND 1/4 TURN
LATCH. CAN BE
ORDERED IN ALUMINUM
OR STAINLESS STEEL.
OTHER COLOR COATINGS
ARE AVAILABLE

MIN 3/4" DIA ANCHOR BOLTS
WITH WASHER AND NUTS,
GALVANIZED STEEL

SEE DETAIL A

LAMP POLE PROFILE

LAMP POLE BACK VIEW



ANCHOR BASE DETAIL DETAIL A

REVISIONS			
BY / REV	DESCRIPTION	DATE	APPR
RAH / 0	CONCEPT REVIEW	07-07-11	

ASSEMBLY DRAWING - GENERIC SOLAR HARVESTER	
Slater.com <small>A MEMBER OF ANIRCORP, LLC</small>	DRG NO. DR07971101
7905 State Street, Salem, Oregon 97317	SCALE NONE
	S SIZE NA SHEET NO. 1 OF 1